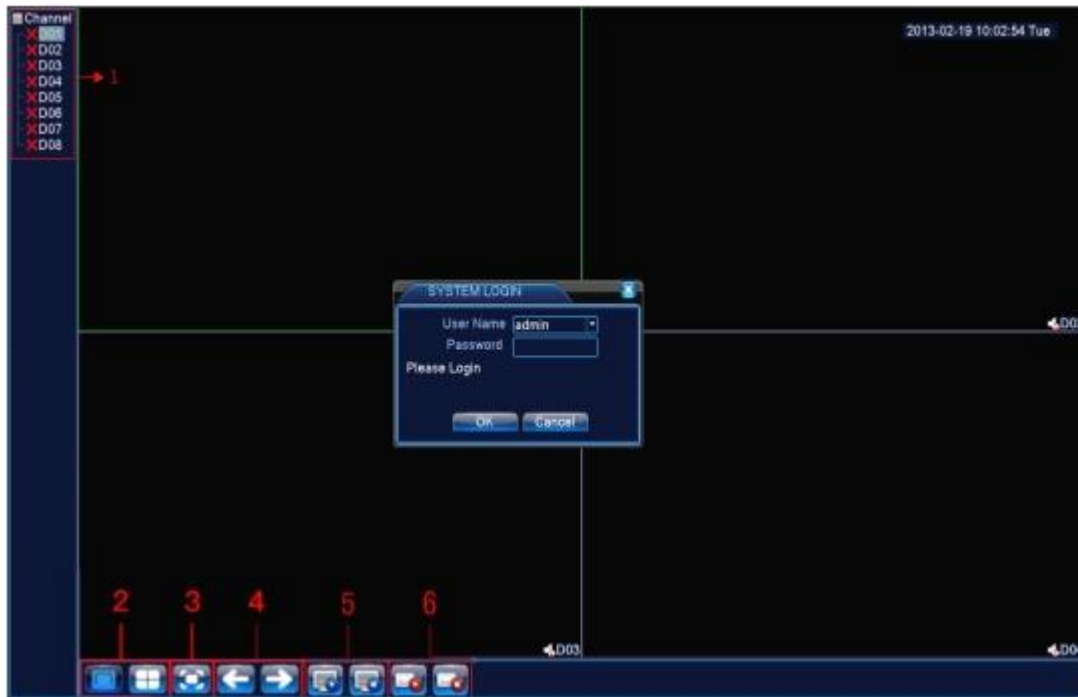


NVR Basic operation

1、Login:

When the device boots up, the user must login and the system provides the corresponding functions with the user purview

There are two user settings, **admin** and **guest**, they have no password. **Admin** is the super user purview, guest's permissions are preview and video playback。



Pic 1.1 NVR login interface

1	Channel name and status display, click "channel" can pack up, and right click the channel can configurate it.	4	on the next page turning, when choosing a non maximum number of channels, the operation can be carried our.
2	Screen switch	5	All channel Play
3	Full screen display	6	All channel Record

Password protection: If the password is continuous wrong three times, the alarm will start. If the password is continuous wrong five times, the account will be locked. (Through reboot or after half an hour, the account will be unlocked automatically).

For your system security, please modify your password after first login.

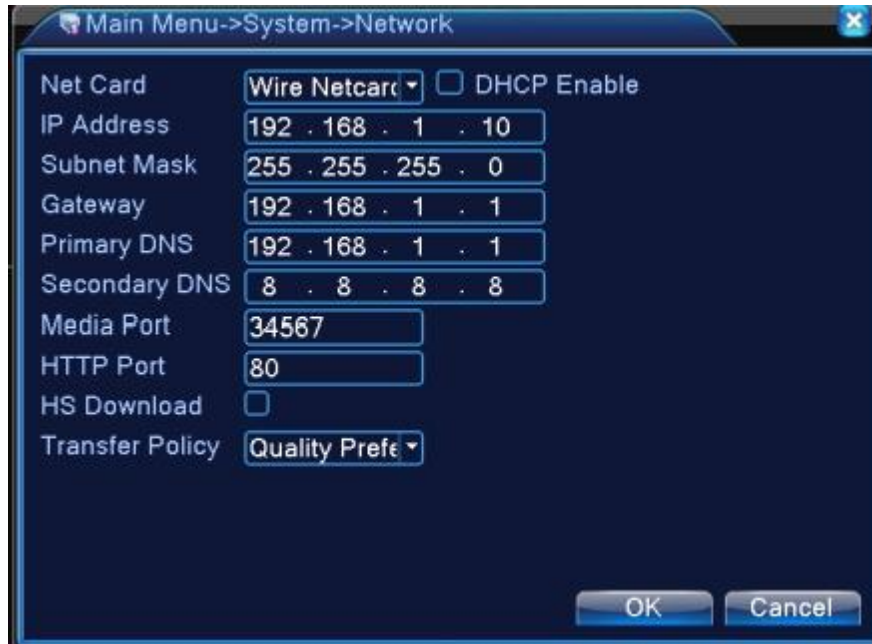
2、 Network setup

To set the IP, the path is [Main menu]>[System]>[Network]

[IP Address]: default 192.168.1.10;

[Subnet Mask]: default 255.255.255.0;

[Gateway]: default 192.168.1.1



Pic 2.1 Network configuration

Setting the device IP and the router's in the same network segment. For example, the router's IP address is 192.168.1.1, subnet mask is 255.255.255.0, so the default setting is ok. Generally the default gateway is The same asr outer's IP address. Input the IP (192.18.1.10) with IE, you can login the device in the lan.

3、 channel manage

Through [Main Menu]>[System]>[Digital]

Channel manage including digital channels, channel status, and channel type (Note: Encoder only have Channel type option):



Pic 3.1 The channel manage interface



Pic 3.2 single link page and multi-link page of digital channel

【Channel】 select channel title

【Enable】 Open digital channel, tick enable, then can do related settings

【Time Synchronization】Tick it means the time of this channel and device is the same.

【Connection Mode】 can be single connect or multi-link, multi-link modes can connect to several devices, Device will be displayed one by one, interval can be set, no less than 10s;

【Delete】If the user want to change device, select the existing device, click delete will be ok.

【Add】 click add will come out below page to add new device



Pic 3.3 Remote channel configuration interface

【Configure Name】 device is with default configure title, user can revise it if necessary;

【Device Type】 3types: IPC、 DVR、 HVR, user can choose as what you like, default is IPC;

【Protocol】 Default is NETIP

【Remote channel】 User can input remote channel title from the device that you want to connect remotely.

【Stream】 Default is main stream, do not support extra-stream at present;

【Device address】 IP address of device.

【Port】 Default is 34567

【Username】 Default is admin

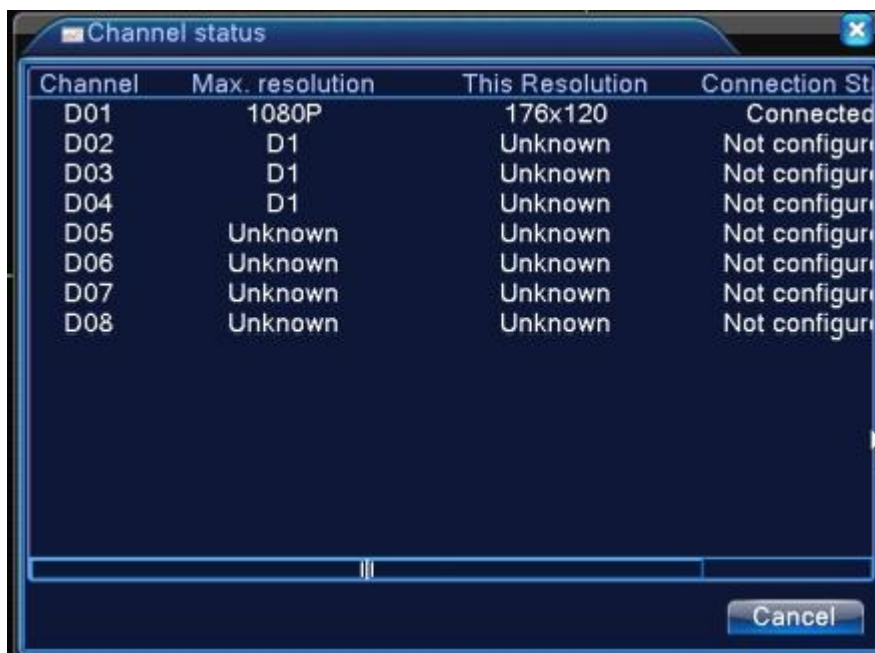
Remark: click 【search】 will show all the devices that searched out, user can

choose any of the device that you like.

Channel Status:

Channel status is to show the status of all the digital channel When there is what existing, status including Max Resolution, This Resolution, ConnectionStatus.

Channel status:



Channel	Max. resolution	This Resolution	Connection Status
D01	1080P	176x120	Connected
D02	D1	Unknown	Not configured
D03	D1	Unknown	Not configured
D04	D1	Unknown	Not configured
D05	Unknown	Unknown	Not configured
D06	Unknown	Unknown	Not configured
D07	Unknown	Unknown	Not configured
D08	Unknown	Unknown	Not configured

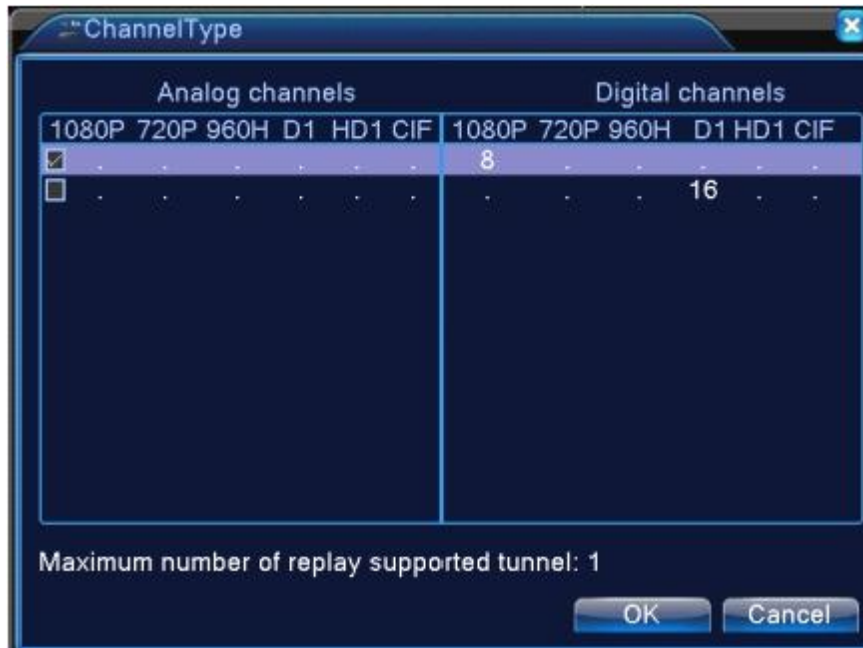
Pic 3.4 channel status

Remark: when This Resolution is over Max Resolution, when preview it, will show a red X, as beow:

Under all digital channel mode, Max resolution of channel 3 is D1, if it was connected to a device with resolution over D1 (such as 960H), you will see below pic:



Channel type:



Pic 3.5 channel type

Note: Encoder only support two all analog (DVR) type, 1*1080P+3*960H/D1





HD decoder only support one digital type, 1*1080P

Different professional NVR model can support different type.

4、 Preview

You can right click mouse to choose the switch between the windows.

The system date, time and channel name are shown in each viewing window. The surveillance video And the alarm status are shown in each window.

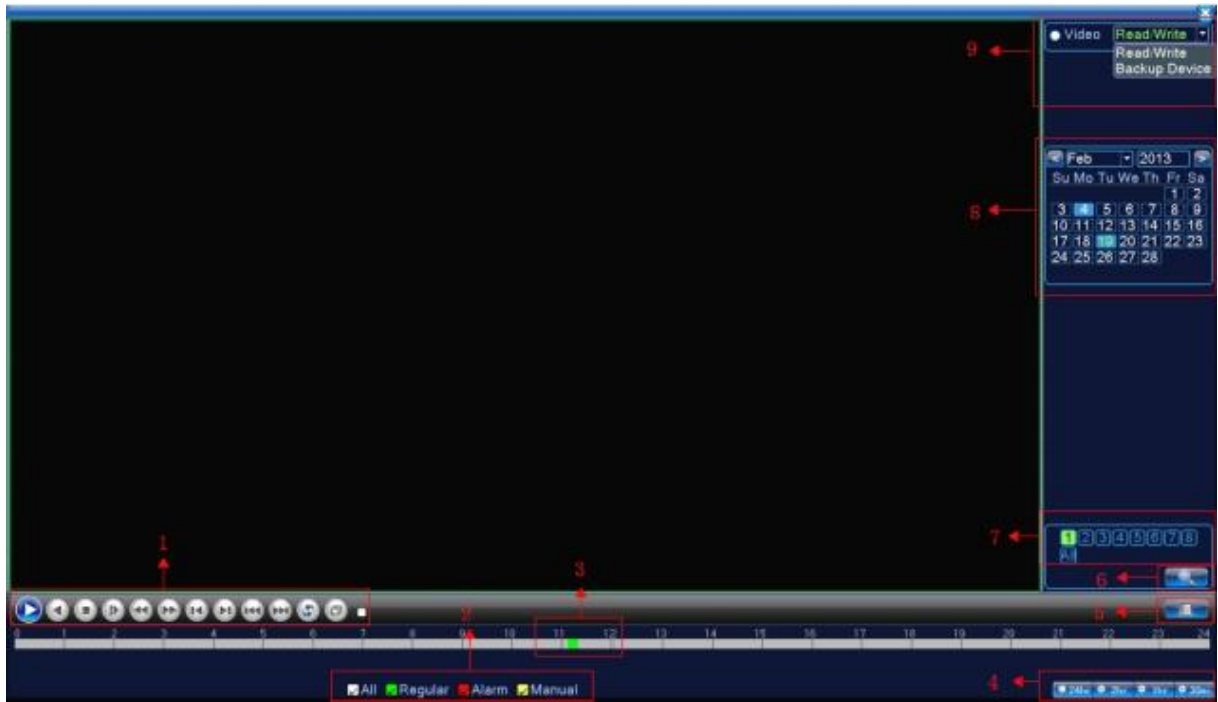
1		Video loss	3		Motion detect
2		Camera lock	4		Video bind

5、 Video Playback

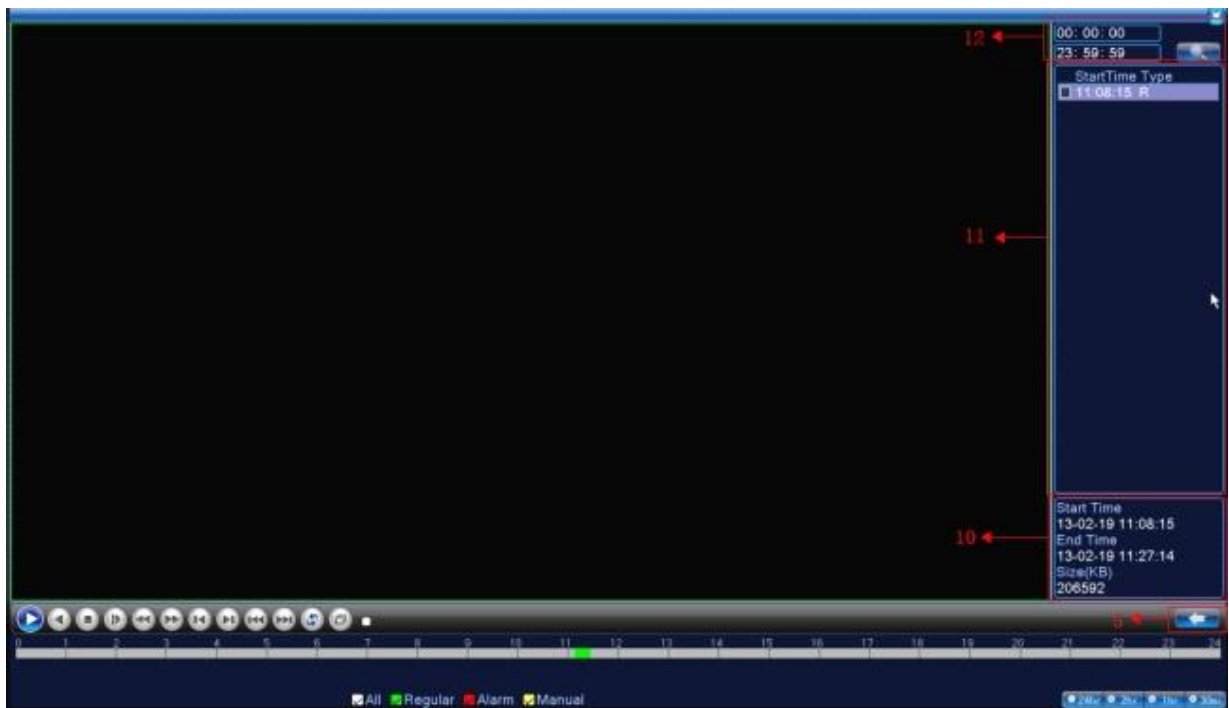
There are two methods for you to play the video files in the hard disk

- 1.in the desktop shortcut menu
- 2.Main Menu>Record>playback

Note:The hard disk that saves the video files must be set as read-write or read-only state.



Pic 5.1 playback interface 1



Pic 5.2 playback interface 2

1	Playback control	5	Switch by time, file mode	9	Storage device choosing
2	Video mode	6	File searching	10	File information
3	Time progress bar	7	Channel choosing	11	Listed files
4	Time interval choosing	8	Date choosing	12	Time searching